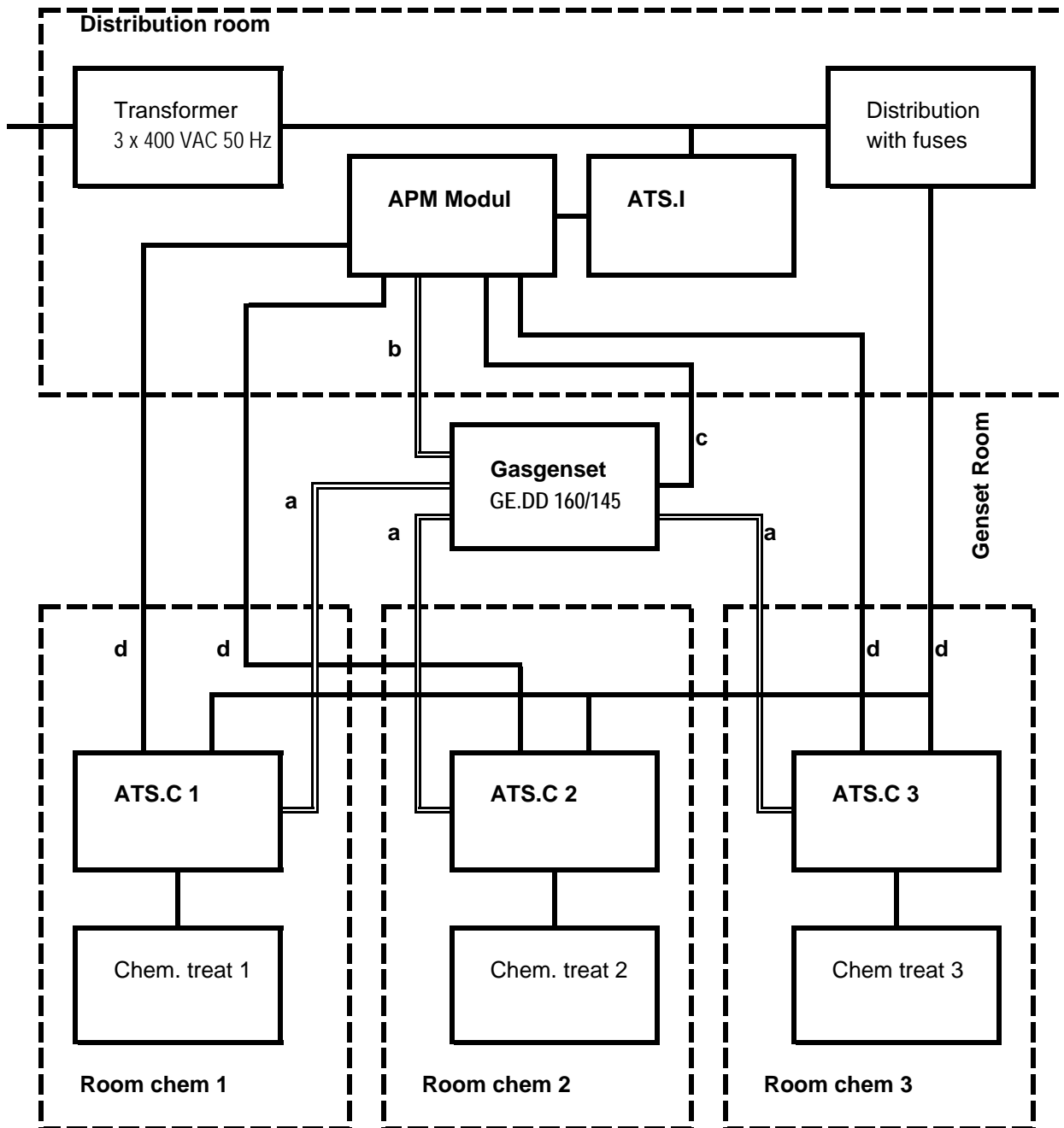


# Schematic of installation of GE.DD 160/145 gas generator



Power lines      **c:** 70 mmq x 4      **d:** 35 mmq x 4  
 Control lines      **a:** 7x1,5      **b:** 3 cavi 2x1,5 schermati + 1 cavo 3x2,5 + 1 cavo 10x1,5

Genset has to be between the transformer and the distribution. As the distribution has fuses, which can blow, the genset has to be connected direct with 3 change over switches located by the chemical treating units, detecting an power inerruption.. If the chemical treatment stops, the mass will blow out explosif gases.